



Seva School

Attendance and Absence Policy

Approved by: PPSC&S Committee

Date of Review: September 2022

Next Review: September 2023

Contents:

Statement of intent

1. Legal framework
2. Definitions
3. Roles and responsibilities
4. Attendance expectations
5. Absence procedures
6. Attendance register
7. Authorising parental absence requests
8. SEND- and health-related absence
9. Absence in exceptional circumstances
10. Truancy
11. Missing children
12. Attendance intervention
13. Working with parents to improve attendance
14. PA
15. Legal intervention
16. Monitoring and analysing absence
17. Training of staff
18. Monitoring and review

Appendices

- A. Attendance Monitoring Procedures
- B. Attendance Reporting Structure
- C. Attendance Agreement Forms

Statement of intent

Seva School believes that in order to facilitate teaching and learning, good attendance is essential. Pupils cannot achieve their full potential if they do not regularly attend school.

We understand that barriers to attendance are complex, and that some pupils find it harder than others to attend school; therefore, we will continue to prioritise cultivating a safe and supportive environment at school, as well as strong and trusting relationships with pupils and parents.

We take a whole-school approach to securing good attendance, and recognise the impact that our efforts in other areas – such as the curriculum, behaviour standards, bullying, SEND support, pastoral support, and the effective use of resources such as pupil premium – can have on improving pupil attendance.

We are committed to:

- Promoting and modelling high attendance and its benefits.
- Ensuring equality and fairness for all.
- Intervening early and working with other agencies to ensure the health and safety of our pupils.
- Building strong relationships with families to overcome barriers to attendance.
- Working collaboratively with other schools in the area, as well as other agencies.
- Ensuring parents follow the framework set in section 7 of the Education Act 1996, which states that the parent of every child of compulsory school age shall cause them to receive efficient full-time education suitable to their age, ability and aptitude, and to any SEND they may have, either by regular attendance at school or otherwise.
- Ensuring our attendance policy is clear and easily understood by all staff, parents and pupils.
- Regularly monitoring and analysing attendance and absence data to identify pupils or cohorts that require more support.

The school's Attendance, Family & Welfare Officer is Mrs S Alcock, and can be contacted via s.alcock@seva.coventry.sch.uk. Staff, parents and pupils will be expected to contact the attendance officer for queries or concerns about attendance.

1. Legal framework

This policy has due regard to all relevant legislation and statutory guidance including, but not limited to, the following:

- Education Act 1996
- Equality Act 2010
- The Education (Pupil Registration) (England) Regulations 2006 (as amended)
- DfE (2022) 'Working together to improve school attendance'
- DfE (2016) 'Children missing education'
- DfE (2022) 'Keeping children safe in education 2022'

This policy operates in conjunction with the following school policies:

- Complaints Procedures Policy
- Children Missing Education Policy
- Child Protection and Safeguarding Policy
- Behaviour Policy
- SEND Policy
- Home Visit Policy

2. Definitions

The following definitions apply for the purposes of this policy:

Absence:

- Arrival at school after the register has closed
- Not attending school for any reason

Authorised absence:

- An absence for sickness for which the school has granted leave
- Medical or dental appointments which unavoidably fall during school time, for which the school has granted leave
- Religious or cultural observances for which the school has granted leave
- An absence due to a family emergency

Unauthorised absence:

- Parents keeping children off school unnecessarily or without reason
- Truancy before or during the school day
- Absences which have never been properly explained
- Arrival at school after the register has closed
- Absence due to shopping, looking after other children or birthdays
- Absence due to day trips and holidays in term-time which have not been agreed
- Leaving school for no reason during the day

Persistent absence (PA):

- Missing 10 percent or more of schooling across the year for any reason

3. Roles and responsibilities

The Trustees and Principal have overall responsibility for:

- Monitoring the implementation of this policy and all relevant procedures across the school.
- Promoting the importance of good attendance through the school's ethos and policies.
- Working with the SLT to set goals for attendance and providing support and challenge around delivery against those goals.
- Ensuring that this policy, as written, does not discriminate on any grounds including, but not limited to, ethnicity/national origin, culture, religion, gender, disability or sexual orientation.
- Handling complaints regarding this policy as outlined in the school's Complaints Procedures Policy.
- Having regard to 'Keeping children safe in education' when making arrangements to safeguard and promote the welfare of children.

The Vice Principal is responsible for:

- The day-to-day implementation and management of this policy and all relevant procedures across the school.
- Arranging attendance training for all relevant staff that is appropriate to their role.
- Line management of the Attendance & Family Welfare Officer for the school
- Ensuring all parents are aware of the school's attendance expectations and procedures.
- Ensuring that every pupil has access to full-time education and will act as early as possible to address patterns of absence.
- Ensuring there is a Children Missing Education Policy in place and that this is regularly reviewed and updated.

The Middle Leader Pastoral and Staff are responsible for:

- Following this policy and ensuring pupils do so too.
- Ensuring this policy is implemented fairly and consistently.
- Modelling good attendance behaviour.
- Using their professional judgement and knowledge of individual pupils to inform decisions as to whether any welfare concerns should be escalated.
- Where designated, taking the attendance register at the relevant times during the school day.

The Attendance, Family & Welfare Officer is responsible for:

- The overall strategic approach to attendance in school.
- Developing a clear vision for improving attendance.

- Monitoring attendance and the impact of interventions.
- Analysing registration and attendance data and identifying areas of intervention and improvement.
- Communicating with pupils and parents with regard to attendance.
- Following up on incidents of persistent poor attendance.
- Informing the LA of any pupil being deleted from the admission and attendance registers.
- Working closely with the SIMs/Admissions Administrator and Operations Manager for Data and Exams to ensure all data is accurate and up to date.

Parents are responsible for:

- Providing accurate and up-to-date contact details.
- Providing the school with more than one emergency contact number.
- Updating the school if their details change.
- The attendance of their children at school.
- Promoting good attendance with their children.

Pupils are responsible for:

- Attending their lessons and any agreed activities when at school.
- Arriving punctually to lessons when at school.

4. Attendance expectations

The school has high expectations for pupils' attendance and punctuality, and ensures that these expectations are communicated regularly to parents and pupils.

Pupils will be expected to:

- Attend school every day they are required to be at school, for the full day.
- Attend school punctually.
- Attend every timetabled lesson.

The school day starts at 08.30. Pupils will have morning breaks, Primary 10:00 am and Secondary 10.40 am for 20 minutes, and lunch breaks - Primary from 11.50am till 12.50 pm, and Secondary from 1pm till 2.15 pm – years 9, 10 & 11 will have their lunch at 1pm and then tutor time at 1.45pm when the pm register will be taken, Years 7 & 8 will have tutor time first and then lunch at 1.45pm till 2.15pm, when the pm register will be taken. Pupils will be expected to have returned from each break and be ready to recommence learning at the stated times.

Registers will be taken as follows throughout the school day:

- The morning register will be marked by 8.40am. Pupils will receive a late mark if they are not in their classroom by this time. Pupils attending after this time will receive a mark to show that they were on site, but this will count as a late mark
- The morning register will close at 9:00am. Pupils will receive a mark of absence if they do not attend school before this time

- The afternoon register will close at 13:00 for Primary, 13:55 and 14:25. Pupils will receive a mark of absence if they are not present and the Attendance & Family Welfare Officer will action a response.

Secondary teachers will take registers at the start of each lesson period to ensure that pupils are attending all timetabled lessons. These registers will be analysed alongside formal registers in line with the section of this policy.

Pupils will be encouraged to communicate any concerns related to attendance and absence as soon as possible to the relevant member of staff.

5. Absence procedures

Parents will be required to contact the school office, leave a voicemail choosing option 1 or email the Attendance, Family & Welfare Officer before 8.30am on the first day of their child's absence – they will be expected to provide an explanation for the absence. Parents will need to inform the Attendance Officer every day of the pupil's absence unless they have already informed the Attendance Officer of a long absence i.e., surgery, medical illness.

Where a pupil is absent, and their parent has not contacted the school by 9:00am to report the absence, the Attendance, Family & Welfare Officer will contact the parent by telephone or leave a voicemail if parent does not answer the telephone as soon as is practicable on the first day that the pupil does not attend school.

The school will always follow up any absences in order to:

- Ascertain the reason for the absence.
- Ensure the proper safeguarding action is being taken.
- Identify whether the absence is authorised or not.
- Identify the correct code to use to enter the data onto the school census system.
- First Aid Home Visit Calling for all absences marked with an 'N' code and
- First Aid Home Visit Calling for all pupils who have a high illness absence record.

Where a pupil is absent for more than three school days in a row, or more than 10 school days in one term, the pupil's parent will be expected to provide a signed letter with an explanation for the absence(s).

The school will not request medical evidence in most circumstances where a pupil is absent due to illness; however, the school reserves the right to request supporting evidence where there is genuine and reasonable doubt about the authenticity of the illness.

In the case of PA, arrangements will be made for parents to speak to the Attendance, Family & Welfare Officer. The school will inform the LA, on a half termly basis, of the details of pupils who fail to attend regularly, or who have missed 10 school days or more without authorisation.

If a pupil's attendance drops below 90 percent, the Attendance Officer will arrange a formal meeting with the Vice Principal of Welfare & Wellbeing, pupil and their parents.

Where a pupil has not returned to school for 10 days after an authorised absence or is absent from school without authorisation for 20 consecutive school days, the school will remove the pupil from the admissions register if the school and the LA have failed to establish the whereabouts of the pupil after making reasonable enquiries.

6. Attendance register

The school uses SIMs to keep attendance registers to ensure they are as accurate as possible and can be easily analysed and shared with the appropriate authorities.

Designated staff members will take the attendance register at the start of each school day and at the start of the afternoon session. This register will record whether pupils are:

- Present.
- Absent.
- Attending an approved educational activity.
- Medical appointment
- Unable to attend due to exceptional circumstances.

The school will use the national attendance codes to ensure attendance and absence are monitored and recorded in a consistent way. The following codes will be used:

- / = Present in the morning
- \ = Present in the afternoon
- L = Late arrival before the register has closed
- C = Leave of absence granted by the school
- H = Authorised holiday
- E = Excluded but no alternative provision made
- I = Illness
- M = Medical or dental appointments
- R = Religious observance
- S = Study leave
- T = Gypsy, Roma and Traveller absence
- G = Unauthorised holiday
- N = Reason not yet provided
- O = Unauthorised absence
- U = Arrived after registration closed
- D = Dual registered at another educational establishment
- B = Off-site education activity
- J = At an interview with prospective employers, or another educational establishment
- P = Participating in a supervised sporting activity
- V = Educational visit or trip
- W = Work experience
- Y = Exceptional circumstances
- Z = Pupil not on admission register

When the school has planned in advance to be fully or partially closed, the code '# ' will be used for the relevant pupils who are absent. This code will also be used to record year groups

who are not due to attend because the school has set different term dates for different years, e.g. induction days.

All amendments made to the attendance register will include the original entry, the amended entry, the reason for the amendment, the date of amendment and the name and role of the person who made the amendment.

Every entry received into the attendance register will be preserved for three years.

7. Authorising parental absence requests

Parents will be required to request certain types of absence in advance. All requests for absence will be handled by the principal – the decision to grant or refuse the request will be at the sole discretion of the principal, taking the best interests of the pupil and the impact on the pupil's education into account. The principal's decision is not subject to appeal; however, the school will be sympathetic to requests for absence by parents and will not deny any request without good reason.

Leave of absence

The school will only grant a pupil a leave of absence in exceptional circumstances. In order to have requests for a leave of absence considered, the school will expect parents to have filled in a Holiday/Absence form to be considered by the Attendance officer and Principal at least three weeks prior to the proposed start date of the leave of absence, providing the reason for the proposed absence and the dates during which the absence would be expected to occur.

Any requests for leave during term time will be considered on an individual basis and the pupil's previous attendance record will be taken into account. Where the absence is granted, the Principal will determine the length of time that the pupil can be away from school. The school is not likely to grant leaves of absence for the purposes of family holidays.

Requests for leave will not be granted in the following circumstances:

- During Year 1 and Year 7 when a pupil is settling into the school, unless certain exceptional circumstances apply, e.g. the death of a family member
- Immediately before and during assessment periods
- When a pupil's attendance record shows any unauthorised absence
- Where a pupil's authorised absence record is already above 10 percent for any reason

If term-time leave is not granted, taking a pupil out of school will be recorded as an unauthorised absence and may result in sanctions, such as a penalty notice. The school cannot grant leaves of absence retrospectively; therefore, any absences that were not approved by the school in advance will be marked as unauthorised.

Illness and healthcare appointments

Parents will be expected to make medical or dental appointments outside of school hours wherever possible. Where this is not possible, parents will be expected to obtain approval for their child's absence to attend such appointments as far in advance as is practicable. Parents

will be responsible for ensuring their child misses only the amount of time necessary to attend the appointment.

Performances and activities, including paid work

The school will ensure that all pupils engaging in performances or activities, whether they receive payment or not, which require them to be absent from school, understand that they will be required to obtain a licence from the LA which authorises the school's absence(s).

Additional arrangements will be made by the school for pupils engaging in performances or activities that require them to be absent from school to ensure they do not fall behind in their education – this may involve private teaching. These arrangements will be approved by the LA who will ensure that the arrangements are suitable for the pupil.

The pupil will receive education that, when taken together over the term of the licence, amounts to a minimum of three hours per day that the pupil would be required to attend a school maintained by the LA issuing the licence. This requirement will be met by ensuring a pupil receives an education:

- For not less than six hours a week; and
- During each complete period of four weeks (or if there is a period of less than four weeks, then during that period), for periods of time not less than three hours a day; and
- On days where the pupil would be required to attend school if they were attending a school maintained by the LA; and
- For not more than five hours on any such day.

Where a licence has been granted by the LA and it specifies dates of absence, no further authorisation will be needed from the school. Where an application does not specify dates, and it has been approved by the LA, it is at the discretion of the principal to authorise the leave of absence for each day. The principal will not authorise any absences which would mean that a pupil's attendance would fall below 96 percent. Where a licence has not been obtained, the principal will not authorise any absence for a performance or activity.

Religious observance

Parents will be expected to request absence for religious observance at least three weeks advance.

The school will only accept requests from parents for absence on grounds of religious observance for days that are exclusively set apart for religious observance by the relevant religious body. The school will define this as a day where the pupil's parents would be expected by an established religious body to stay away from their employment to mark the occasion.

The school may seek advice from the religious body in question where there is doubt over the request.

Gypsy, Roma and Traveller absence

Where a pupil's parent belongs to a community covered by this code and is travelling for occupational purposes, the parent will be expected to request a leave of absence for their child at least two weeks in advance. Absences will not be granted for pupils from these communities under this code for reasons other than travel for occupational purposes.

8. SEND- and health-related absences

The school recognises that pupils with SEND and/or health conditions, including mental health issues, may face greater barriers to attendance than their peers, and will incorporate robust procedures to support pupils who find attending school difficult.

In line with the SEND Policy and Supporting Pupils with Medical Conditions Policy, the school will ensure that reasonable adjustments are made for disabled pupils to reduce barriers to attendance, in line with any EHC plans or IEPs that have been implemented. The school will secure additional support from external partners to help bolster attendance where appropriate.

Where the school has concerns that a pupil's non-attendance may be related to mental health issues, parents will be contacted to discuss the issue and whether there are any contributory factors to their child's lack of attendance. Where staff have a mental health concern about a pupil that is also a safeguarding concern, they will inform the DSL and the Child Protection and Safeguarding Policy will be followed. All pupils will be supported with their mental health in accordance with the school's Social, Emotional and Mental Health (SEMH) Policy.

If a pupil is unable to attend school for long periods of time due to their health, the school will:

- Inform the LA if a pupil is likely to be away from the school for more than 15 school days.
- Provide the LA with information about the pupil's needs, capabilities and programme of work.
- Help the pupil reintegrate at school when they return.
- Make sure the pupil is kept informed about school events and clubs.
- Encourage the pupil to stay in contact with other pupils during their absence.

The school will incorporate an action plan to help any pupils with SEND and/or health issues cope with the stress and anxiety that attending school may cause them. Such plans will be regularly monitored and reviewed until the pupil is attending school as normal and there has been signs of significant improvement.

To support the attendance of pupils with SEND and/or health issues, the school will consider:

- Holding half termly meetings to evaluate any implemented reasonable adjustments.
- Incorporating a pastoral support plan.
- Carrying out strengths and difficulties questionnaire.
- Identifying pupils' unmet needs through the Common Assessment Framework.
- Using an internal or external specialist.
- Enabling a pupil to have a reduced timetable.
- Ensuring a pupil can have somewhere quiet to spend lunch and breaktimes.

- Implementing a system whereby pupils can request to leave a classroom if they feel they need time out.
- Temporary late starts or early finishes.
- Phased returns to school where there has been a long absence.
- Small group work or on-to-one lessons.
- Tailored support to meet their individual needs.

9. Absence in exceptional circumstances

Exceptional circumstances will include when a pupil is unable to attend because:

- Transport provided by the school, LA or parent is not available and the pupil's home is not within walking distance.
- There has been widespread disruption to travel services which has prevented the pupil from attending.
- The pupil is in custody and will be detained for less than four months.

The use of the 'Y' code for exceptional circumstances will be collected in the school census for statistical purposes.

10. Truancy

Truancy will be considered as any absence of part, or all, of one or more days from school, during which the school has not been notified of the cause behind such absence.

All staff will be actively engaged in supporting the regular attendance of pupils, and understand the importance of continuity in each pupil's learning.

Any pupil with permission to leave the school during the day must sign out at the school office and sign back in again on their return.

Immediate action will be taken when there are any concerns that a pupil might be truanting. If truancy is suspected, the headteacher is notified, and they will contact the parent in order to assess the reasons behind the pupil not attending school.

The following procedures will be taken in the event of a truancy:

- In the first instance, a letter of warning will be sent to the parents of the pupil, informing them of the truancy and stating that any future occurrences could result in further action being taken.
- If any further truancy occurs, then the school will consider issuing a penalty notice.
- A penalty notice will be issued where there is overt truancy, inappropriate parentally-condoned absence, excessive holidays in term-time and persistent late arrival at school.

11. Missing children

Pupils will not be permitted to leave the school premises during the school day unless they have permission from the school. The following procedures will be taken in the event of a pupil going missing whilst at school:

- The member of staff who has noticed the missing pupil will inform the Attendance Officer immediately.
- The office staff will also be informed as they will act as a point of contact for receiving information regarding the search.
- A member of staff will stay with the rest of the class, and all other available members of staff will conduct a thorough search of the school premises as directed by the Attendance Officer and Vice Principal of Welfare & Wellbeing
- The following areas will be systematically searched:
 - All classrooms
 - All toilets
 - Changing rooms
 - The library
 - Any outbuildings
 - The school grounds

- Available staff will begin a search of the area immediately outside of the school premises and will take a mobile phone with them so they can be contacted.
- If the pupil has not been found after 10 minutes, then the parents of the pupil will be notified.
- The school will attempt to contact parents using the emergency contact numbers provided.
- If the parents have had no contact from the pupil, and the emergency contacts list has been exhausted, the police will be contacted.
- The missing pupil's form tutor will fill in an incident form, describing all circumstances leading up to the pupil going missing.
- If the missing pupil has an allocated social worker, is a looked-after child, or has any SEND, then the appropriate personnel will be informed.
- When the pupil has been located, members of staff will care for and talk to the pupil to ensure they are safe and well.
- Parents and any other agencies will be informed immediately when the pupil has been located.

The Attendance Office and Vice Principal of Welfare & Wellbeing will take the appropriate action to ensure that pupils understand they must not leave the premises, and sanctions will be issued if deemed necessary. Appropriate disciplinary procedures will be followed in accordance with the Behaviour Policy.

The Attendance Officer and Vice Principal of Welfare & Wellbeing will carry out a full investigation and will draw a conclusion as to how the incident occurred. A written report will be produced, and policies and procedures will be reviewed in accordance with the outcome where necessary.

12. Attendance intervention

In order to ensure the school has effective procedures for managing absence, the attendance officer, supported by the SLT, will:

- Establish a range of specific, evidence-based interventions to address barriers to attendance.
- Monitor the implementation and quality of escalation procedures and seek robust evidence of the escalation procedures that work.
- Attend or lead attendance reviews in line with escalation procedures.
- Establish robust escalation procedures which will be initiated before absence becomes a problem by:
 - Sending letters to parents.
 - Having a weekly tutor review.
 - Engaging with LA attendance teams.
 - Using fixed penalty notices.
 - Creating attendance meetings.

The school will use attendance data, in line with the [‘Monitoring and analysing absence’](#) section of this policy, to develop specific strategies to improve attendance where patterns of absence are emerging. These strategies will be developed on a case-by-case basis, and will consider the particular needs of the pupils whom the intervention is designed to target.

The school will aim to improve attendance in the overall school cohort by acknowledging good attendance in the following ways:

- 100% badges and certificates termly
- End of year Cinema trip for pupils with 100%

The school will develop strategies for ensuring that pupils with health needs or home circumstances that result in additional absences are not unfairly excluded from attendance rewards, e.g. by setting individualised targets.

13. Working with parents to improve attendance

The school will work to cultivate strong, respectful relationships with parents and families and work to build trust and engagement. Open and honest communication will be maintained with pupils and their families about the expectations of school life, attendance and performance so that they understand what to expect and what is expected of them. The Attendance Officer will liaise with other agencies working with pupils and their families to support attendance, e.g. social services.

The school will ensure that there are two sets of emergency contact details for each pupil wherever possible to ensure the school has additional options for getting in touch with adults responsible for a pupil where the pupil is absent without notification or authorisation.

The school will ensure that parents are aware of their legal duty to ensure that their child attends school regularly and to facilitate their child's legal right to a full-time education – parents will be made aware that this means their child must attend school every day that it is open, save for in certain circumstances, e.g. sickness or absences that have been authorised by the Attendance Office/Principal in advance. The Attendance Officer will regularly inform parents about their child's levels of attendance, absence and punctuality, and will ensure that parents are aware of the benefits that regular attendance at school can have for their child educationally, socially and developmentally.

If a pattern of absence becomes problematic, the attendance officer will work collaboratively with the pupil and their parents to improve attendance by addressing the specific barriers that prevent the pupil from being able to attend school regularly. The school will always take into consideration the sensitivity of some of the reasons for pupil absence and will approach families to offer support rather than immediately reach for punitive approaches.

Where these barriers are related to the pupil's experience in school, e.g. bullying, the attendance officer will work with the vice principal and any relevant school staff, e.g. the DSL and SENCO, to address this. Where the barriers are outside of the school's control, e.g. they are related to issues within the pupil's family, the attendance officer will liaise with any relevant external agencies or authorities, e.g. children's social care or the LA, and will encourage parents to access support that they may need.

14. PA

There are various groups of pupils who may be vulnerable to high absence and PA, such as:

- Children in need
- LAC
- Young carers
- Pupils who are eligible for FSM
- Pupil Premium
- Pupils with EAL
- Pupils with SEND
- Pupils who have faced bullying and/or discrimination

The school will ensure it provides support to pupils at risk of PA, in conjunction with all relevant external authorities where necessary.

The school will use a number of methods to help support pupils at risk of PA to attend school. These include:

- Offering catch-up support to build confidence and bridge gaps in learning.
- Meeting with the pupil and their parent to discuss patterns of absence, barriers to attendance, and any other problems they may be having.
- Establishing plans to remove barriers and provide additional support.
- Leading weekly check-ins to review progress and assess the impact of support.
- Making regular contact with the pupil's parent to discuss progress.
- Assessing whether an EHC plan or IHP may be appropriate.

- Considering what support for re-engagement might be needed, including with regard to additional vulnerability.
- Parent Contracts

The school will focus particularly on pupils who have rates of absence over 50 percent, and will work with the LA and other partners to engage all relevant services needed to identify and address the wider barriers to attendance these pupils are facing.

Where a pupil at risk of PA is also at increased risk of harm, the school will work in conjunction with all relevant authorities, e.g. social services, to support the pupil in line with the school's duty of care. The school will also bear in mind that the continuation of severe PA following intervention may, in itself, constitute neglect, and will escalate any concerns in this regard in line with the Child Protection and Safeguarding Policy.

15. Legal intervention

The school will allow sufficient time for attendance interventions and engagement strategies to improve pupils' attendance; however, where engagement strategies to improve attendance have not had the desired effect after half a term, the attendance officer will consider:

- Holding a formal meeting with parents and the school's point of contact in the School Attendance Support Team.
- Working with the LA to put a parenting contract or an education supervision order in place.
- Engaging children's social care where there are safeguarding concerns.

Where the above measures are not effective, the headteacher will issue a fixed penalty notice in line with the LA's code of conduct.

Where attendance still does not improve following a fixed penalty notice, the school will work with the LA to take forward attendance prosecution as a last resort.

16. Monitoring and analysing absence

The Attendance Officer will monitor and analyse attendance data weekly to ensure that intervention and support is delivered quickly to address habitual absence at the first signs.

The school will collect data regarding punctuality, truancy, and authorised and unauthorised absence, for:

- The school cohort as a whole.
- Individual year groups.
- Year groups preparing for exams.
- Individual pupils.
- Demographic groups, e.g. pupils from different ethnic groups or economic backgrounds.
- Other groups of pupils, e.g. pupils with SEND, LAC, PP and pupils eligible for FSM.

- Pupils at risk of PA.

The Attendance Officer will conduct thorough analysis of the above data on a weekly, half-termly, termly and full-year basis to identify patterns and trends. This will include identifying, for each group:

- Patterns in uses of certain codes.
- Particular days of poor attendance.
- Subjects which have low lesson attendance.
- Historic trends of attendance and absence.
- Barriers to attendance.

The attendance officer will provide regular reports to staff across the school to enable them to track the attendance of pupils and to implement attendance procedures. The attendance officer will also be responsible for monitoring how attendance data changes in response to any interventions implemented to increase attendance in future.

The Trustees will regularly review attendance data, including examinations of recent and historic trends, and will support the SLT in setting goals and prioritising areas of focus for attendance support based on this data.

The school will also benchmark its attendance data against local-, regional- and national-level data to identify areas of success and areas for improvement, and will share practice which has been shown to be effective with other schools.

17. Training of staff

The school will recognise that early intervention can prevent poor attendance. As such, staff will receive training in identifying potentially at-risk pupils as part of their induction and refresher training.

The governing board will ensure that teachers and support staff receive training in line with this policy as part of their induction. Following this initial training, staff will be offered regular and ongoing training as part of their CPD opportunities.

Training will cover at least the following:

- The importance of good attendance
- That absence is almost invariably a result of wider circumstances
- The legal requirements on schools, e.g. the keeping of registers
- The school's strategies and procedures for monitoring and improving attendance
- The school's procedures for multi-agency working to provide intensive support for pupils who need it

The Trustees will provide dedicated and enhanced attendance training to the attendance officer and other staff with specific attendance functions in their role – this will include training regarding interpreting and analysing attendance data and supporting pupils to overcome barriers to attendance.

Staff will receive training to ensure they understand that increased absence from school could indicate a safeguarding concern, and know how such concerns should be managed.

18. Monitoring and review

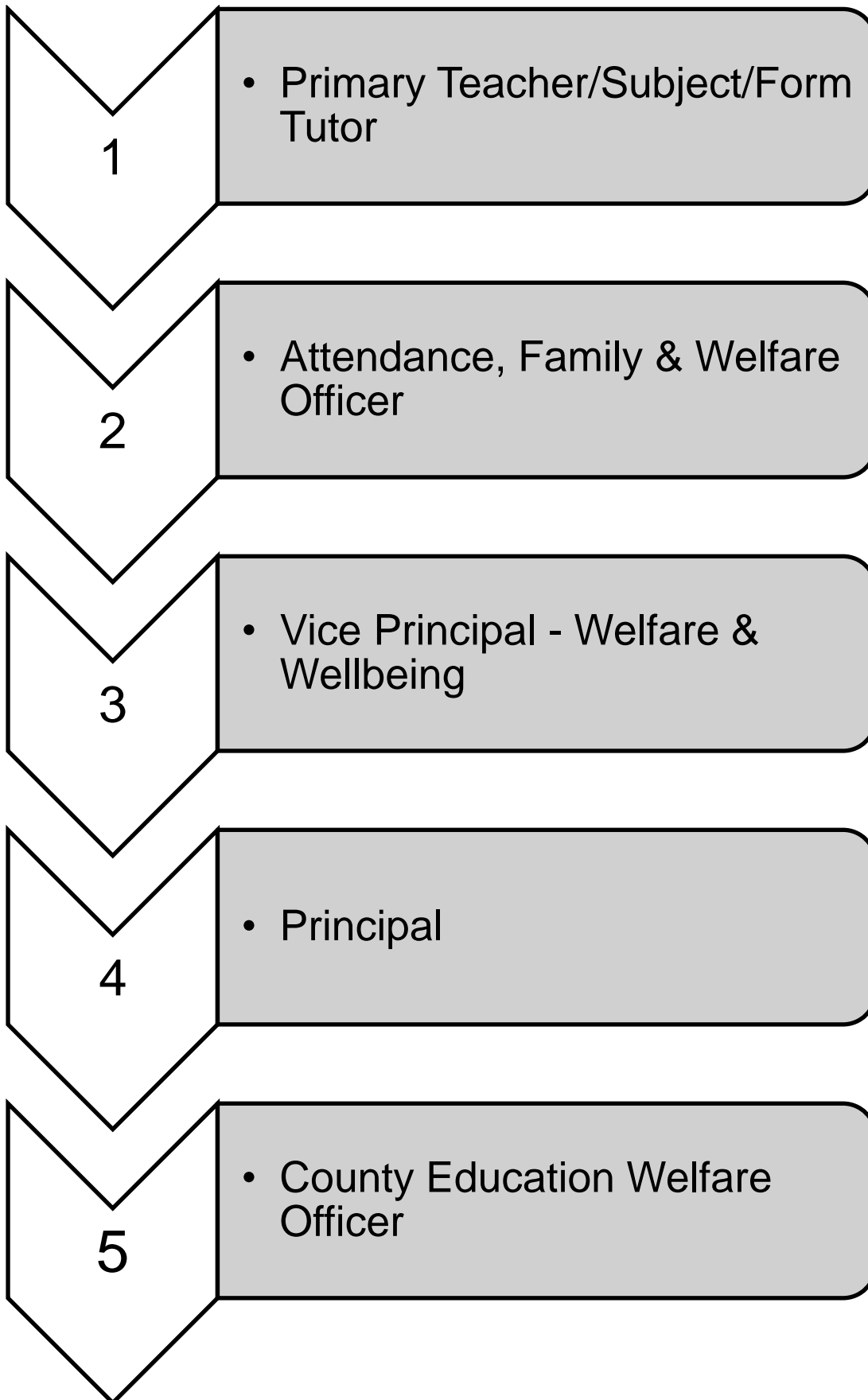
Attendance and punctuality will be monitored throughout the year. The school's attendance target is 97 percent – full details of the school's absence levels can be found on the school website. This policy will be reviewed every two years by the principal. The next scheduled review date for this policy is September 2024

Any changes made to this policy will be communicated to all relevant Trustees.

Attendance Monitoring Procedures

1. A daily dashboard will be sent to SLT with a report of all those that require a First Aid Call on the day.
2. A red, amber, green (RAG) rated dashboard will be sent to SLT with weekly and YTD attendance and absence data
3. The Vice Principal and Middle Leader Pastoral analyse weekly and YTD trends and email AO and relevant staff targets to be reached
4. All students receiving a home visit will be monitored by the AO and a weekly report will be sent to SLT to evidence impact.
5. Preventative Stage - Pupil attendance is between 96% and 98% the AO will speak to the pupil to discuss any issues or problems to ascertain how the school can help to improve their attendance and email their parents a leaflet explaining the importance of attending school and the impact of lost learning.
6. Early Intervention Stage - Pupil attendance is 91% to 95.99% the AO will make a phone call to the parents and will then send a letter.
7. Targeted Intervention Stage - Pupil attendance 90.99% and below the AO will contact the parents for a meeting at school or at home with the AO and Vice Principal. If parents are unwilling to co-operate, or genuinely unable to attend, a referral may be required to the local education welfare officer (EWO) who will then carry out a home visit.
8. If attendance has not improved within a two-week monitoring period or if attendance has fallen rapidly, parents will be invited to either: a school attendance meeting with VP, AO and EWO, if appropriate, or a medical action planning meeting with the school nurse, VP, AO and SENDCO. Provision will be discussed and targets will be set for raising attendance. This will be monitored over a further two-week period.
9. After the further two-week monitoring period, if targets are met, a letter will be sent home from the Attendance Officer and Vice Principal of Welfare & Wellbeing to congratulate the pupil and the family. Monitoring and communication with the family will continue until attendance stabilises – if targets are not met, the AO & VPWW will make a referral to the EWO. Education Welfare protocol will be followed and a parental contract will be drawn up – there will be a four week monitoring period (20 days). No improvements in this time will result in a final written warning. If there is still no further improvement following this, then a fixed penalty notice or court action will be issued.

Attendance Reporting Structure



Attendance Agreement Form

Pupil Attendance Agreement

I agree to attend school and understand the consequences I may face if my attendance drops below 98 percent. I will ensure that the school is made immediately aware of when I will not reasonably be able to attend, and will give the school full details of my absence.

As a pupil of Seva School, I am dedicated to:

- Being in attendance every day.
- Always being punctual to school and lessons.
- Informing the school of the reason for any absence.
- Not missing school for trivial reasons.

Pupil name:	Date:
Form tutor name:	Date:

Parental Attendance Agreement

I understand that it is my responsibility to send my child to school. I agree to send my child to school every day and understand the consequences if I fail to do so. When my child is absent from school due to exceptional circumstances, I will ensure the correct procedures are followed.

Parent name:	Date:
Form tutor name:	Date: